



MATATIELE
LOCAL MUNICIPALITY

MATATIELE LOCAL MUNICIPALITY

Research and analysis of ward profiling: Ward based plans

WARD 22

May 2018

TSHANI
CONSULTING C.C.

Contents

1. Executive Summary of Ward4

2. Methodology5

3. Ward Overview.....5

4. Socio Economic Analysis6

5. Built Environment Assessment..... 12

6. Current Projects 14

7. Ward Needs and Priorities 15

8. Stakeholder within Ward 15

9. Key Social Challenges..... 15

List of Tables

Table 1: SWOT Analysis – Community Based Planning Program 2017 (Data Collection)	5
Table 2: Major Event within the Ward – Community Based Planning Program 2017 (Data Collection)	5
Table 3: Programmes within the Ward – Community Based Planning Program 2017 (Data Collection)	6
Table 4: Population Size and Distribution within the Ward – Community Based Planning Program 2017 (Data Collection)	6
Table 5: Social Grant Dependency within Ward - Community Based Planning Program 2017 (Data Collection)	7
Table 6: Indigent Support	8
Table 7: Child and Female Headed Households within the Ward - Census 2011	8
Table 8: Education Facilities within Ward - Community Based Planning Program 2017 (Data Collection) ..	9
Table 9: Churches and Religious Organisations within the Ward - Community Based Planning Program 2017 (Data Collection)	10
Table 10: Health Care Facilities: Community Based Planning Program 2017 (Data Collection)	10
Table 11: Community Halls - Community Based Planning Program 2017 (Data Collection)	10
Table 12: Economic Activity - Community Based Planning Program 2017 (Data Collection)	11
Table 13: Tourism Activities - Community Based Planning Program 2017 (Data Collection)	11
Table 14: Agricultural Activities- Community Based Planning Program 2017 (Data Collection)	12
Table 15: Products produced within the Ward- Community Based Planning Program 2017 (Data Collection)	12
Table 16: Existing Skills within the Ward: Community Based Planning Program 2017 (Data Collection) ..	12
Table 17: Access to water- Community Based Planning Program 2017 (Data Collection)	12
Table 18: Access to sanitation- Community Based Planning Program 2017 (Data Collection)	13
Table 19: Main Source of Energy- Community Based Planning Program 2017 (Data Collection)	14
Table 20: Roads and Bridges within the Ward- Community Based Planning Program 2017 (Data Collection)	14
Table 21: Current Projects- Community Based Planning Program 2017 (Data Collection)	15
Table 22: Ward Needs and Priorities- Community Based Planning Program 2017 (Data Collection)	15
Table 23: Stakeholders engaged during community engagement sessions- Community Based Planning Program 2017 (Data Collection)	15
Table 24: Key Social Challenges- Community Based Planning Program 2017 (Data Collection)	15

List of Figures

Figure 1: Gender Distribution	6
Figure 2: Age within Ward Distribution – Census 2011	7
Figure 3: Language Proficiency within Ward – Census 2011	7
Figure 4 : Gender of Household Head - Census 2011	8
Figure 5: Types of Dwelling within Ward – Census 2011	9
Figure 6: Individual Monthly Income - Census 2011	11
Figure 7: Source of Water supply within the Ward - Community Based Planning Program 2017 (Data Collection)	13
Figure 8: Access to Sanitation Facilities – Census 2011	13

List of Plans

Plan 1: Ward 22 Locality	5
Plan 2: Education Facilities	9
Plan 3: Health Care Facilities - Community Based Planning Program 2017 (Data Collection)	10
Plan 4: Other Social Facilities	11
Plan 5: Access to Flush toilets - Census 2011	13
Plan 6: Roads and Bridges within the Ward - MLM GIS	14

The following sections have been identified and populated as part of the analysis for Ward 22. The headings which have been covered are seen as critical topics for the ward analysis. When broken down one can properly understand and interpret the spatial economic status quo and development trajectory of the Ward.

1. Executive Summary of Ward

Ward 22 is located on the southern boundary of the MLM. The ward is surrounded by wards 18, 26 and 21. On the southern direction, it is bordered by the Umzimvubu Local Municipality. Ward 22 comprises of Elukholweni, Mpofini, Small-Iokishi, Ezitapile, Phalane, Epiphany, Upper Mkhemane and Rolweni villages. The total population of Ward 22 is estimated at 6 285, as per *Census 2011* the number of households consist of 1941. The most spoken language in is isiXhosa, followed by English, the gender split within the ward is made up of 53% female and 47% males. The dominant age group in Ward 22 is the classified age group of 05-09yrs. The population of this ward is dominated by younger people (00-19).

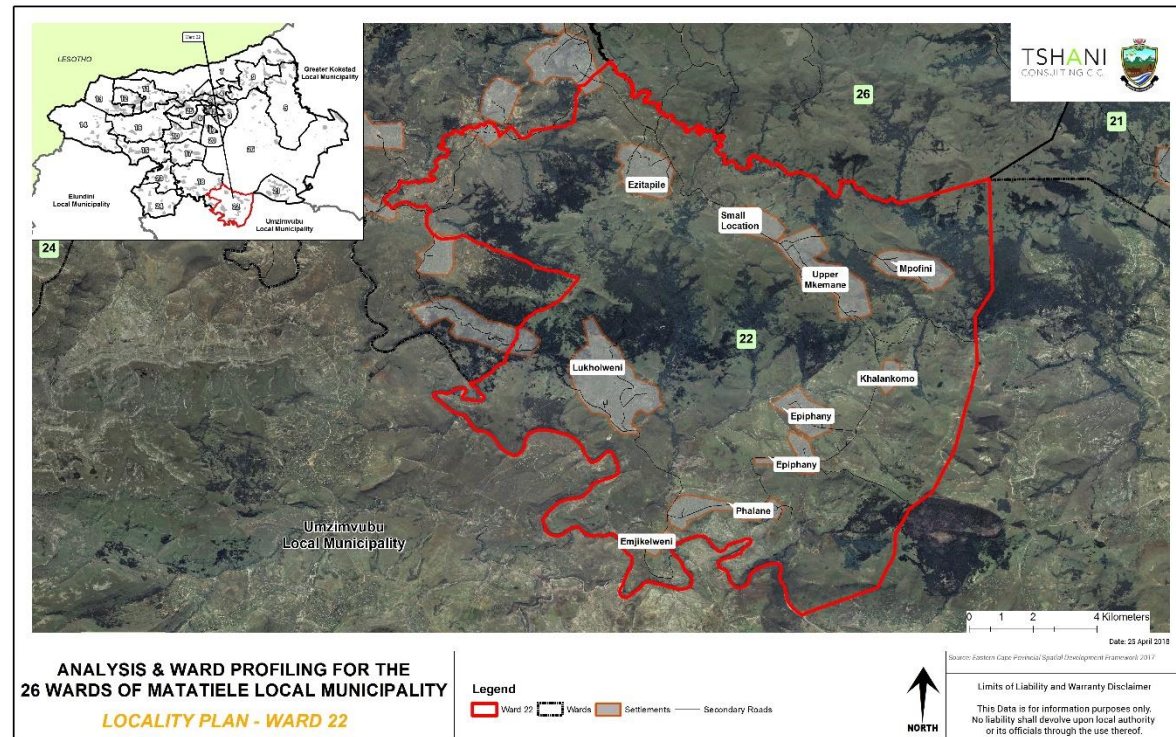
There are two (2) health care facilities located within the ward one is located in Elukholweni and the other in Rolweni as well as a mobile clinic serving Upper Mkhemane and Zitapile. The clinics provide primary basic health services such as family planning, basic check-ups and immunization among others. There are two community halls within the ward one in Upper Mkhemane and the other in Phalane village.

This ward is one of the wards that has no access to electricity. Most of the households within the ward use candles for lighting, paraffin for heating and wood for cooking. In terms of water and sanitation, the District Municipality (ANDM) currently provides water and sanitation to Matatiele Local Municipality area. There is a large backlog with regards the provision of water and sanitation. Three villages have no community taps which results in many households having to walk at least 1km away to source water from the dams.



1.1. Locality

Ward 22 is located on the southern boundary of the MLM. The ward is surrounded by wards 18, 26 and 21. On the southern direction, it is bordered by the Umzimvubu Local Municipality. As depicted in the plan below, the villages within ward 22 are Elukholweni, Mpofini, Small-Iokishi Ezitapile, Phalane, Epiphany, Upper Mkhemane and Rolweni. It is to be noted that all Wards which have been listed were identified through the community outreach programmes.



Plan 1: Ward 22 Locality

2. Methodology

The methodology utilised for the analysis and profiling in this report was derived as follows:

1. Synthesis an interpretation of questionnaires and community feedback;
2. Translated information into a Strength, Weakness, Opportunities and Threats analysis;
3. Conducted a verification process on the populations profiles, social profile and economic profile using Census 2011 data which was conducted at a Ward level;
4. A detailed GIS mapping exercise was completed in order to translate the findings into spatially represented outcomes;
5. Ward needs, and priorities were identified for the wards;
6. Needs identified for the ward were translated into projects and a consolidated implementation plan together within financial implications was completed.

The analysis of ward 22 also took its '*point of departure*' from the primary data which was available from the data collection and community consultation completed in the previous phase

3. Ward Overview

The section below highlights the specific sections which were analysed in relation to ward 22.

3.1 SWOT Analysis

The SWOT analysis was developed, through a series of engagement sessions with the local community and traditional leadership of Ward 22, by the municipality.

STRENGTHS	WEAKNESSES
<ul style="list-style-type: none"> Sand soil for brick making Land for cultivation Forestry Clinic and mobile clinic 	<ul style="list-style-type: none"> Lack of water & irrigation –scheme. Land is not fenced Forestry are not protected Poor Access Roads Teenage Pregnancy
OPPORTUNITIES	THREATS
<ul style="list-style-type: none"> Ploughing fields Job creation Co-operative initiatives 	<ul style="list-style-type: none"> Climate change (Disasters, Veld fires) Soil erosion Unemployment

Table 1: SWOT Analysis – Community Based Planning Program 2017 (Data Collection)

3.2 Major events within the Ward

The table below highlights the major events which have taken place /happened within Ward 22 over the last couple of years. The ward has experienced positive investment in the form of a civic centre, sports fields and tarring of internal streets.

EVENT/ OCCURANCE	YEAR	IMPACT
World Aids Day	2012	
Launch of EPWP Project	2012	
Candle Light Memorial		
HIV & AIDS Awareness	2015	
Disaster (Rain & Wind)	2015	Homes left damaged

Table 2: Major Event within the Ward – Community Based Planning Program 2017 (Data Collection)

3.3 Services/ Infrastructure and Programmes Within the Ward Within The 5-Year Period (2012-2016)

Ward 22 has experienced a fair amount of infrastructure investment in the 2015-16 financial year. It is evident that the benefits of these projects have benefited the ward as well as the municipality as a whole.

Type	Year	Beneficiaries	Status / present condition	Impact
NGO NAPWA	2012	Infected & affected HIV & AIDS	Paused	Get tested & Disclosing.
DRO8016	2010	Whole ward	It is in a bad condition especially when it is the raining season	The becomes wet it is not easy for cars and buses to use the road
Mpofini Access Road	2008	Mkhemane to Mpofini	This road was never maintained and the condition is very bad	It becomes hard to reach the destination
Lukholweni Access Road	2014	Lukholweni Community	Better condition but will need maintenance is future	
Zitapile Access Road	2016	Zitapile	Better	

Table 3: Programmes within the Ward – Community Based Planning Program 2017 (Data Collection)

4. Socio Economic Analysis

4.1. Population Profile

The sub sections below provides an analysis of the population profile of ward 22.

4.1.1. Population Size and Distribution

The total population of Ward 22 is 6285 and number of households is 1 758.

LIST OF VILLAGES/ LOCATIONS/SU B AREAS	OTHER NAME/S FOR THE VILLAGE/ LOCATIO N	NUMBER OF HOUSEHOLDS			POPULATION SIZE (NUMBER OF PEOPLE)		
		Communit y Feedback	Censu s 2011	Projected Househol d by 2050 growing at 0.3% Per Annum	Communit y Feedback	Censu s 2011	Projected Populatio n by 2050 growing at 0.4% Per Annum
Elukolweni	N/A	800			6200		
Phalane	N/A	350			3560		
Epiphany	N/A	595			4300		
Upper Mkemane	N/A	600			5495		
Mpofini		200			1250		
Small-Iokishi	N/A	150			800		
Ezitapile		499			2865		
Rolweni		250			1300		

Total Population -		3600	1758	1941	25770	6285	7141
--------------------	--	------	------	------	-------	------	------

Table 4: Population Size and Distribution within the Ward – Community Based Planning Program 2017 (Data Collection)



4.1.2. Gender Distribution

The chart below depicts that 53% of the total population of Ward 22 are female. This is typical of most wards within Matatiele. This statistic also speaks to the table below on child headed households.

Gender Distribution

■ Male ■ Female

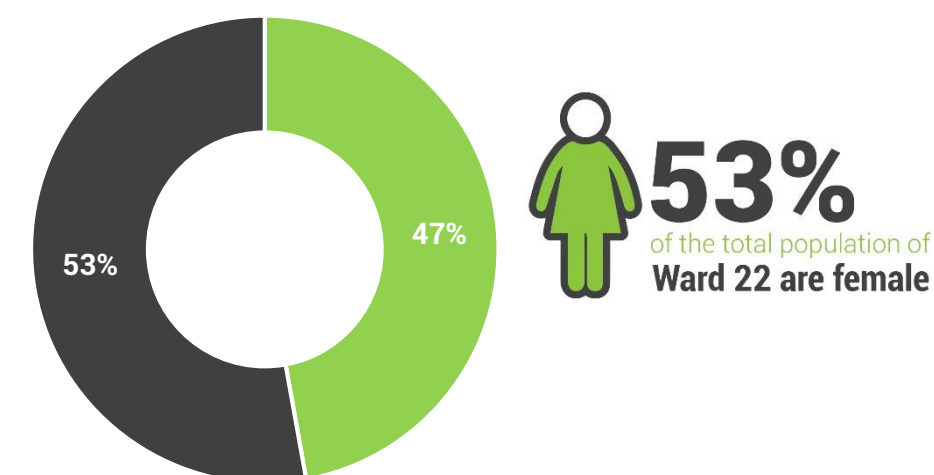


Figure 1: Gender Distribution

4.1.3. Age

The dominant age group in Ward 22 is the classified age group of 05-09yrs. The population of this ward is dominated by younger people (00-19).

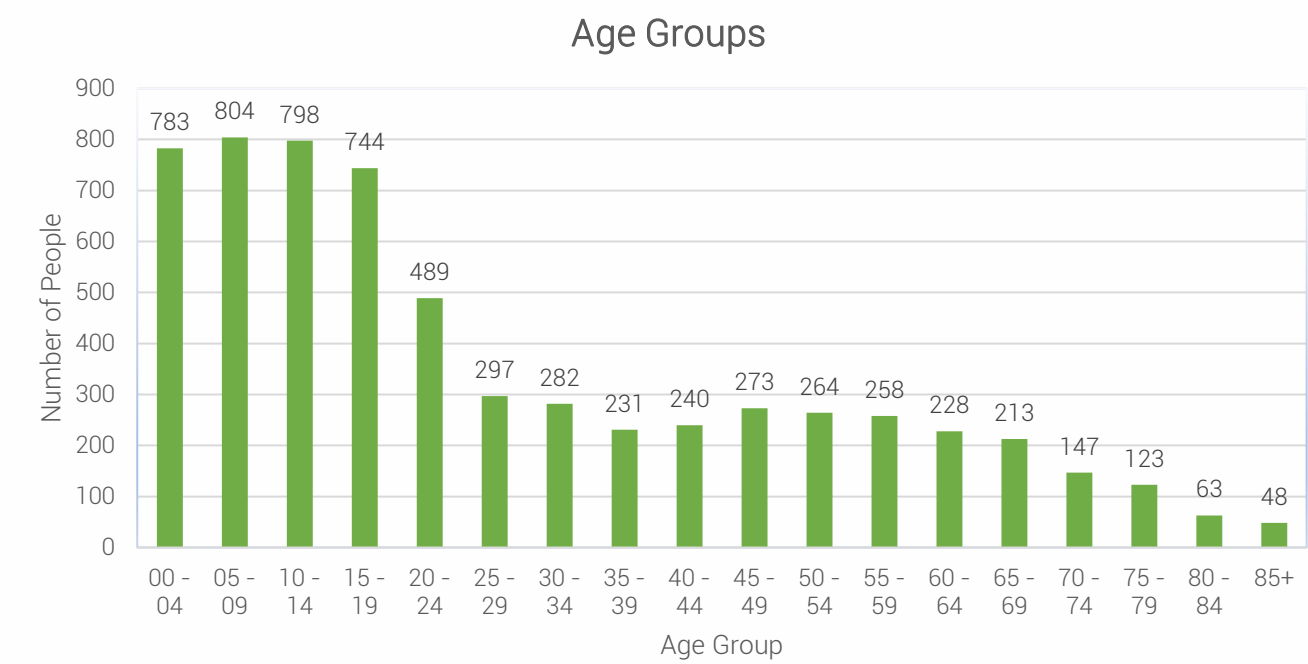


Figure 2: Age within Ward Distribution – Census 2011

4.1.4. Language Distribution

It is evident that the most spoken language in Ward 22 is isiXhosa, followed by English.

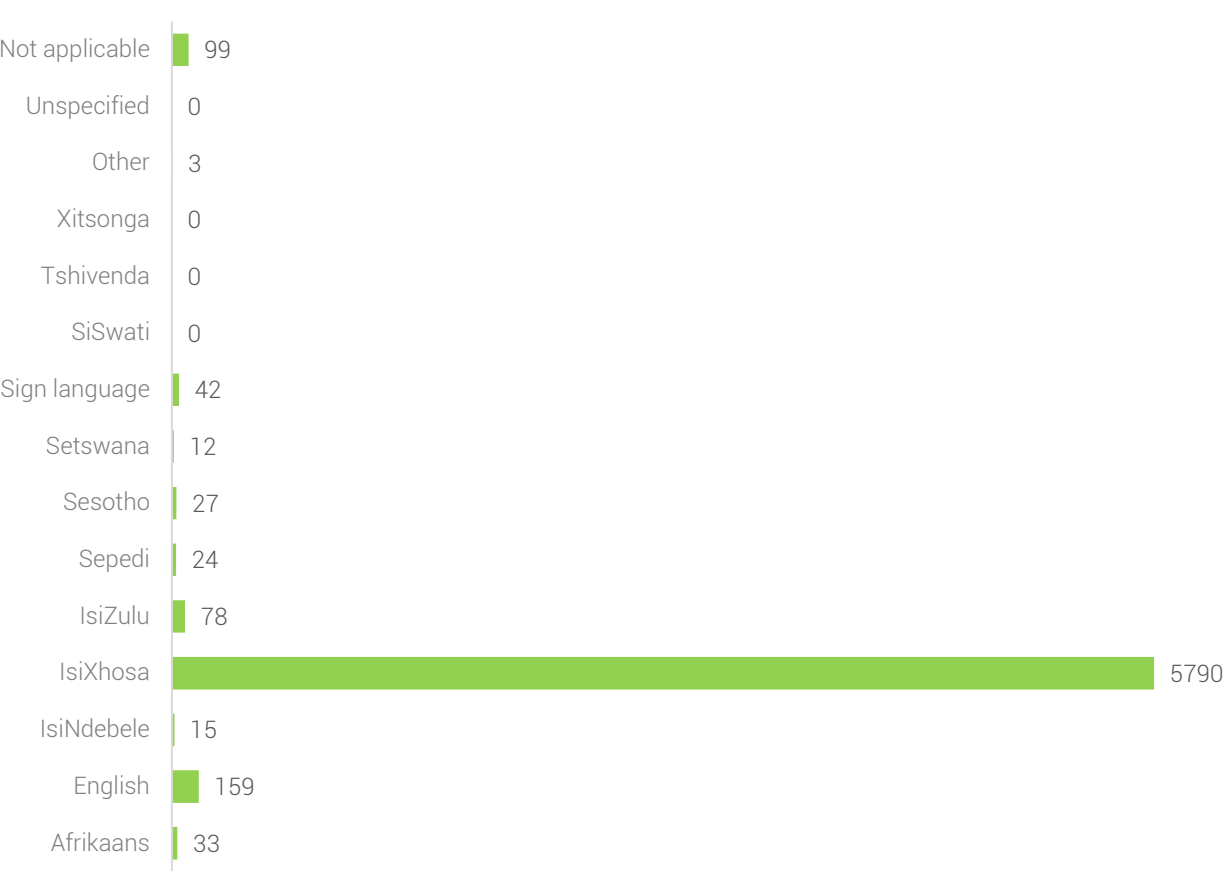


Figure 3: Language Proficiency within Ward – Census 2011

4.1.5. Social Grants

The community survey did not record the social grant, however there are a recipients of social grants within the whole ward given that the dominating age group in the ward is people less than the 18 years of age.

TYPE OF SOCIAL ASSISTANCE OFFERED	NUMBER OF HOUSEHOLDS
	Community Feedback
Child support grant	-
Old age	-
Disability grant	-
Foster care grant	-
Grant in aid	-
Stress relieve grant	-
Food parcels	-

Table 5: Social Grant Dependency within Ward - Community Based Planning Program 2017 (Data Collection

4.1.6. Indigent Support

A rural municipality with a high dependency rate on social assistance; MLM has a large number of indigent households. Particularly for this ward 22. Although the number is high, it is only a few households that receive indigent supports from the municipality. The challenges that affect the provision of such support, include beneficiaries with no properly documents, challenges with verification of beneficiaries amongst other issues. The current indigent support register show that only 679 beneficiaries registered in this ward.

NUMBER OF INDIGENT HOUSEHOLDS	HOUSEHOLDS RECEIVING SERVICES	TOTAL BACKLOG
-	-	-

Table 6: Indigent Support



4.2. Household Profile

The section below provides details of households within Ward 22 in terms of their size, gender of heads of households and distribution.

4.2.1. Average Household Size

The household size within Ward 22 include an average of four (4) persons per household.

4.2.2. Heads of Households

The issue of child headed households remains a major challenge in Ward 22 and MLM are alike. There is a need to prioritise support in the form of community awareness and social programmes in keeping with teenage pregnancy and contraception. The challenges is exacerbated by the trends of a larger part of the population which is represented by females also heading many households.

Based on the table below it is evident that the issue of child headed households is a major issue.

Villages	Child-Headed households		Female-Headed Households	
	Community Feedback	Census 2011	Community Feedback	Census 2011
Phalane	5		80	
Epiphany	5	3	100	153
Upper Mkemane	6		150	
Elukolweni	8		300	
Rolweni	4		50	
Ezitapile	5		45	
Total	33	21	725	1002

Table 7: Child and Female Headed Households within the Ward - Census 2011



The graph below indicates that approximately 57% of households in ward 22 are headed by women.

Gender of Household Head

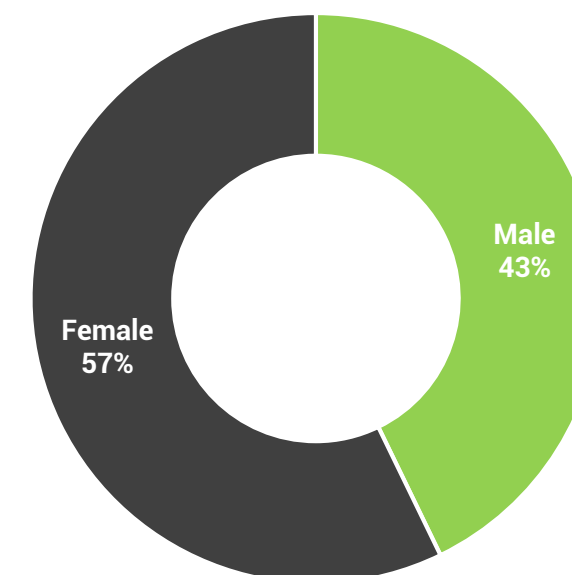


Figure 4 : Gender of Household Head - Census 2011

4.2.3. Household Dwelling types

The majority of people in Ward 22 live in traditional dwellings and brick.

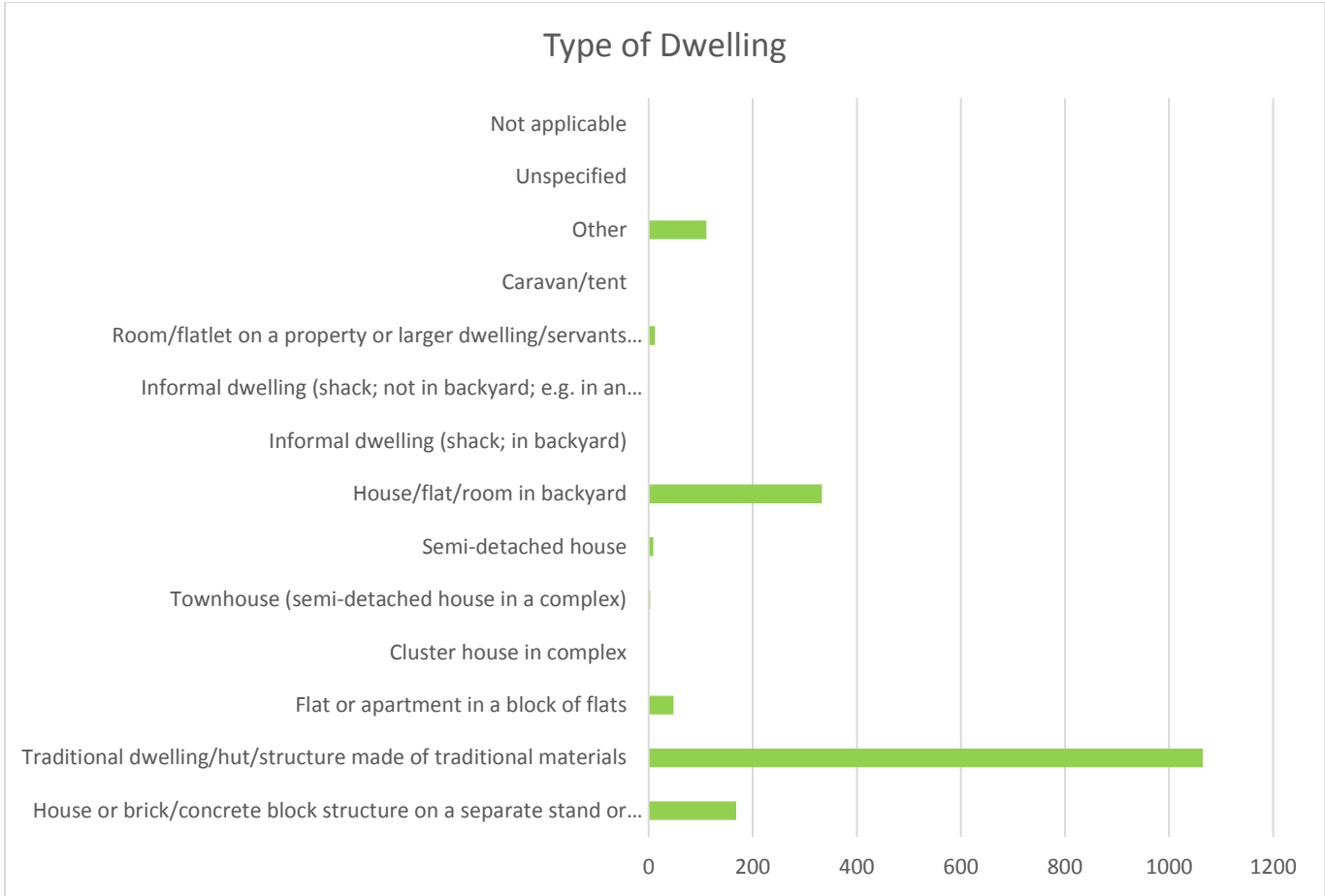


Figure 5: Types of Dwelling within Ward – Census 2011

4.3. Social Profile

4.3.1. Education Facilities: Community Feedback

The range of schools identified in the table below was developed from the community feedback sessions.

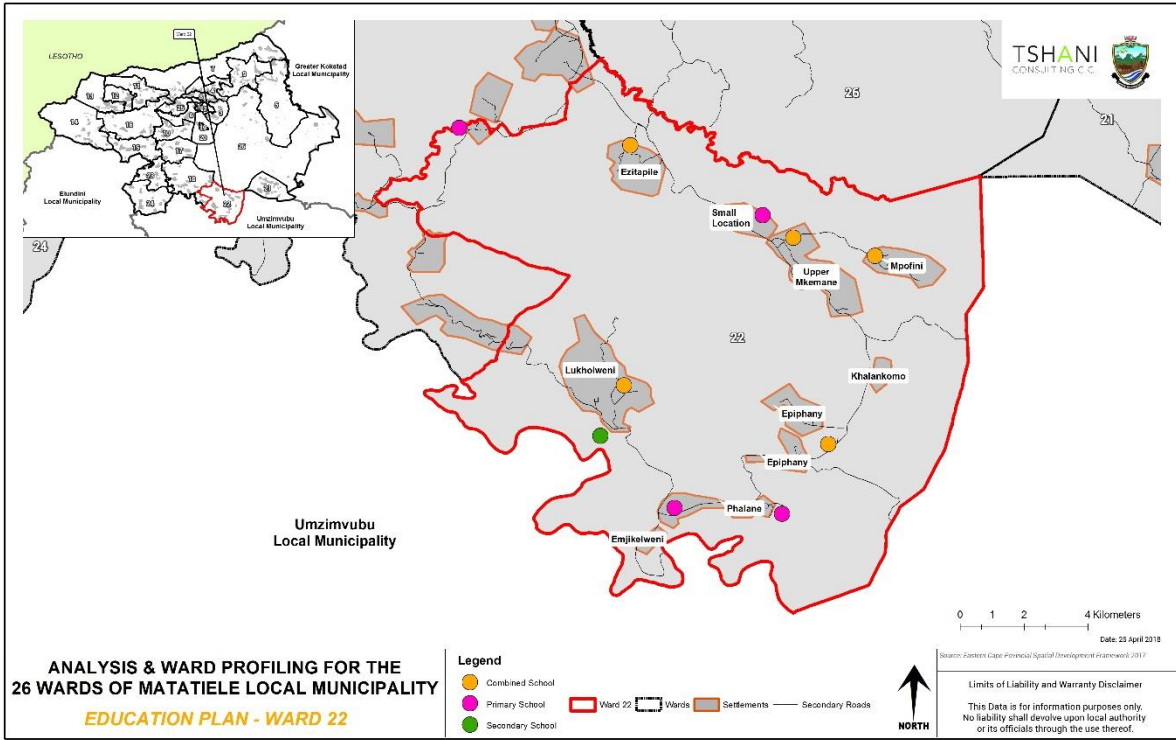
NAME	TYPE	AREA LOCATED	NUMBER OF LEARNERS
Mkhuhlane- kop PS	Primary School	Ezitapile	189
Lower Rolweni LP	Lower Primary School	Rolweni	95
Luhlekweni PS	Primary School	Phalane	166
Elukolweni PS	Primary School	Elukolweni	200
Ludidi SSS	Secondary School	Elukolweni	200

Upper Mkemane JSS Mpofini LP Lingelihle LP	Combined Schools	Upper Mkemane Mpofini Small-Iokishi	190
Hotolo PS Mbizweni LP	Primary School Lower Primary	Epiphany Phalane	200 62

Table 8: Education Facilities within Ward - Community Based Planning Program 2017 (Data Collection)

4.3.2. Education Facilities

Ward 22 comprises of combined schools and Primary schools and Secondary school.



Plan 2: Education Facilities

4.3.3. Churches and Religious Organisations: Community Feedback

The range of religious facilities identified in the table below was developed from the community feedback sessions.

Some of the churches do not have the structures, as they operate within the households.

NAME	LOCATION/AREA	NUMBER
Presbyterian Church	Phalane Elukolweni Epiphany Upper Mkemane Small – Iokishi Mpofini Ezitapile	07
Englican Church	Phalane Epiphany Elukolweni	03

Moravian Church	Elukolweni Phalane Epiphany Rolweni	04
Methodist Church of SA	Elukolweni Phalane Epiphany Upper Mkemane	04
Roman Catholic Church	Phalane Small – lokishi Ezitapile	03
Zion Christian Church (ZCC)	Phalane	01
12 Apostles	Phalane	01
Faith Mission	Upper Mkemane	01
St John's Apostolic Church	Phalane & Epiphany	02
Zionist	Epiphany	01

Table 9: Churches and Religious Organisations within the Ward - Community Based Planning Program 2017 (Data Collection)

4.3.4. Health Care Facilities: Community Feedback

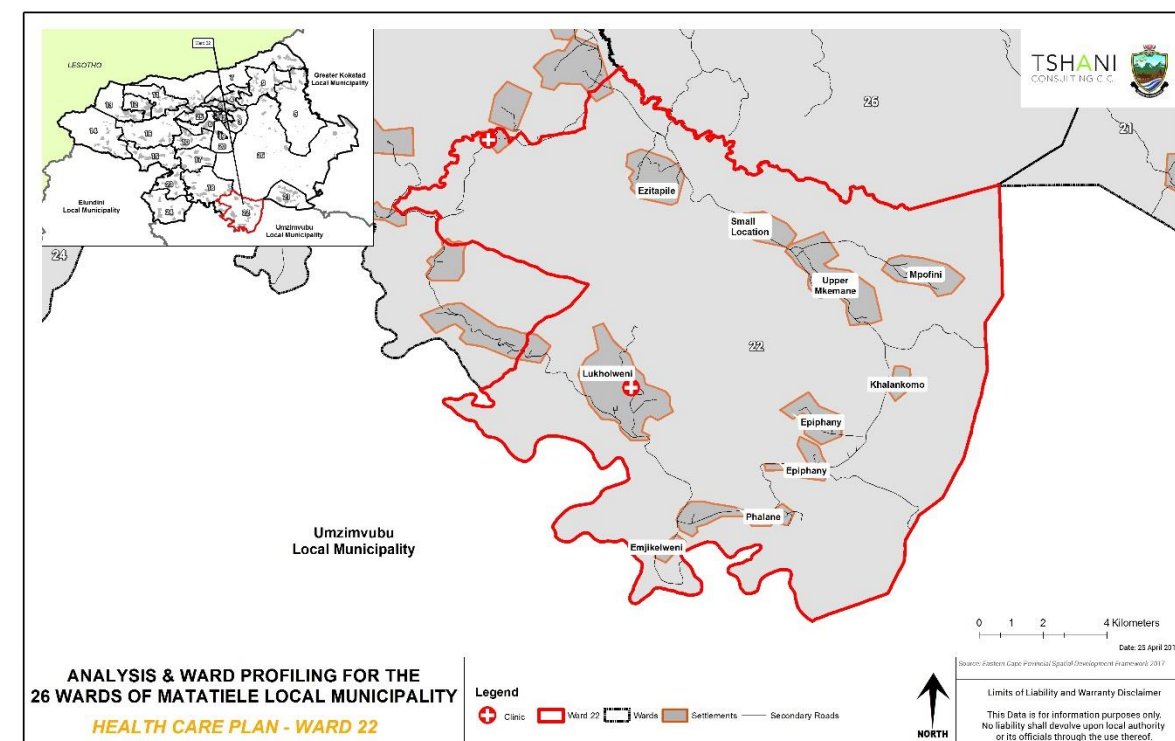
The community feedback identified 2 health facilities within the ward and there is also a mobile clinics that goes to the villages of Ezitapile and Upper Mkemane. This ward could be said to have sufficient health care facilities for primary healthcare.

Name and type	Area located	Primary services provided
Elukolweni Clinic	Elukolweni	All service
Rolweni Clinic	Rolweni	All services
Mobile Clinic	Upper Mkemane Ezitapile	All service
Club	Phalane Epiphany Upper Mkemane	ARVS & Chronic ARVS ARVS

Table 10: Health Care Facilities: Community Based Planning Program 2017 (Data Collection)

4.3.5. Health Care Facilities

The map below spatially identified the clinic which is located just in the boundary of Ward 22.



Plan 3: Health Care Facilities - Community Based Planning Program 2017 (Data Collection)

4.3.6. Community Hall: Community Feedback

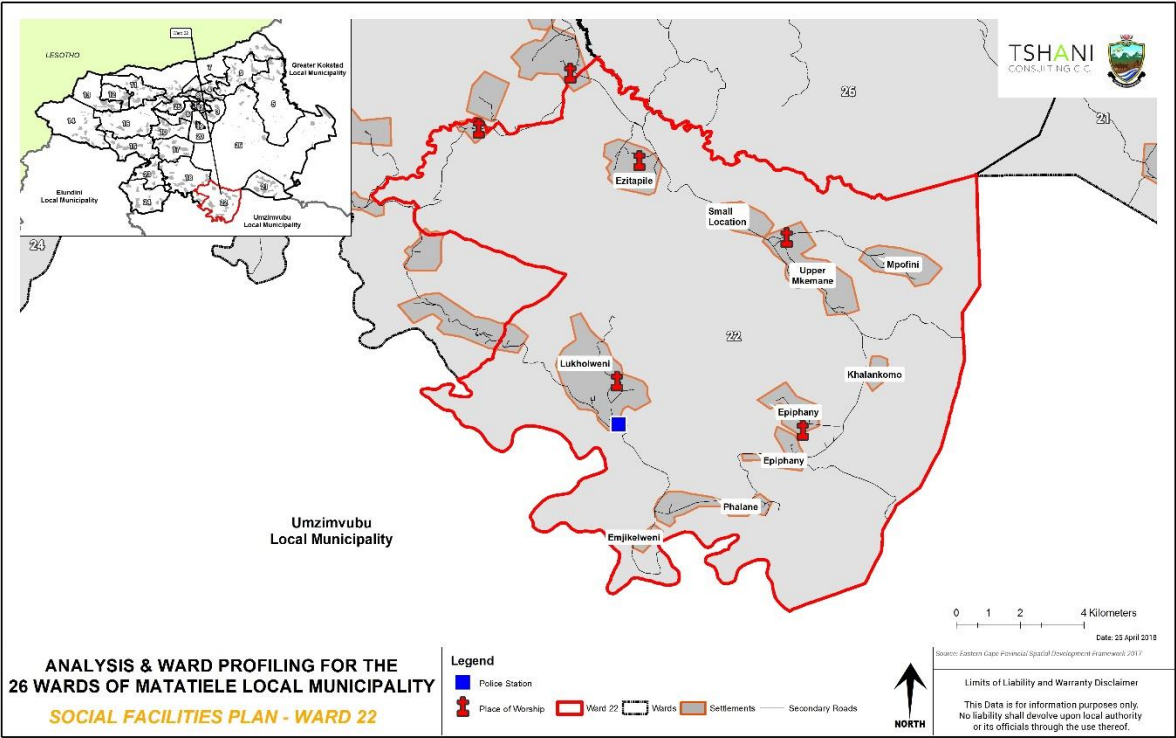
There are 2 community halls noted within the ward, they are located in Upper Mkemane and Phalane.

Name and type	Area located
Upper Mkemane Community Hall	Upper Mkemane
Phalane Community Hall	Phalane

Table 11: Community Halls - Community Based Planning Program 2017 (Data Collection)

4.3.7. Other Social Facilities

The map below spatially identifies places of worship within ward 22.



Plan 4: Other Social Facilities

4.4. Economic Profile

4.4.1. Individual Monthly Income: Census 2011

Over half of the population of ward 22 receives less than R800 or no income monthly. This community has predominantly low income earners.

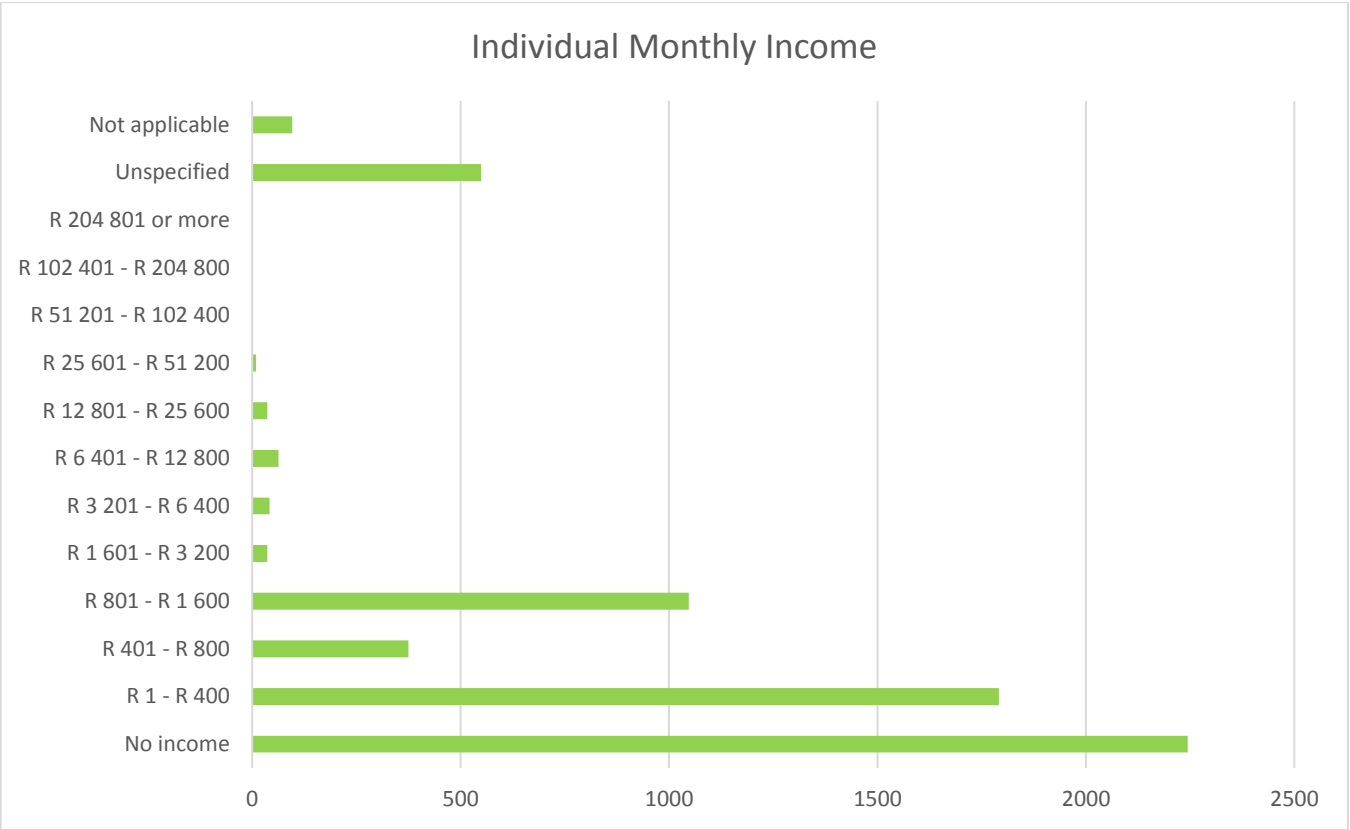


Figure 6: Individual Monthly Income - Census 2011

4.4.2. Economic Activities: Community Feedback

It is noted that shops that sell alcohol are the most dominant in ward 22. This is very typical of areas with a very high unemployment rate and youth. Shops and Spaza shops make up the other retail facilities within ward 22.

RETAIL (INDICATE SHOPS, SPAZA SHOPS, CAFÉ, TARVENS, SALONS, ETC)	
TYPE	LOCATION
Tarvens	Elukolweni Phalane Epiphany
Shops	Epiphany Phalane Elukolweni
Spaza Shops	Whole Ward
Shebeens (Drinking Spots)	All over the ward

Table 12: Economic Activity - Community Based Planning Program 2017 (Data Collection)

4.4.3. Tourism Activities

There are no tourism activities in Ward 22.

TOURISM (INDICTAE B&BS, HOTELS, ATTRACTION SITES ETC)	
TYPE	LOCATION
-	-

Table 13: Tourism Activities - Community Based Planning Program 2017 (Data Collection)

4.4.4. Agricultural Activities

The community of ward 22 practises both commercial and subsistence farming for their agricultural products.

TYPE OF PRODUCTS	FOR HOUSEHOLD CONSUMPTION	FOR SELLING TO THE COMMUNITY
Cattle	Yes	
Sheep	Yes	
Goats	Yes	
Horses	Yes	
Poultry	Yes	

Table 14: Agricultural Activities- Community Based Planning Program 2017 (Data Collection)

4.4.5. Products Produced in Wards

The table below indicates that products such as traditional clothing and non-dairy animal products are available within the ward that are locally produced. Such individuals responsible for these activities should be better supported and encourages to expand.

TYPE OF PRODUCTS	AREAS / VILLAGES	FOR HOUSEHOLD CONSUMPTION	FOR SELLING TO THE COMMUNITY
Fresh produce	Phalane	Yes	Yes
Clothing	Epiphany Elukolweni Phalane	Yes	Yes
Non Dairy Animal product	Whole Ward	Yes	Yes
Selling Wool (Individual people)	Whole Ward		Yes
Building blocks			

Table 15: Products produced within the Ward- Community Based Planning Program 2017 (Data Collection)

4.4.6. Existing Skills

The ward constitutes of some diverse skills which is a major asset for the ward. Such individuals need to be further trained and opportunities to mentor other unemployed individuals within the community should be encouraged. The entrepreneurs within ward should also be given better access to market opportunities. There a broad range of professionally qualified individuals whom also are major assets for Ward 22.

TYPE OF SKILLS	EXISTING (INDICATE WITH YES/NO)	TYPE OF SKILLS	EXISTING (INDICATE WITH YES/NO)
Carpenters	Yes	pottery	Yes
Plumbing	Yes	teachers	Yes
Builders	Yes	Police	Yes
Artists	Yes	Health officials	Yes
Gardening	Yes	Accountants	Yes
Cooking	Yes	Engineers	Yes
Sewing	Yes	Lawyers	Yes
Writing	Yes	Other (indicate)	
Drivers	Yes		
Farmers			

Table 16: Existing Skills within the Ward: Community Based Planning Program 2017 (Data Collection)

5. Built Environment Assessment

5.1 Access to Waste Removal

The Municipality does not provide the waste collection removal in this ward, hence ward 18 people dispose their own waste.

5.2 Access to Water

The main supplier of water is the District Municipality (ANDM) which currently provides water to Matatiele area. There is a large backlog with regards the provision of water, within ward 22 only 5 villages have access to water and 5 villages have no access to water as a results a large number of people have to walk at least 1km away to source water from the dams or streams as shown in table below.

VILLAGE/LOCATION	COMMUNITY TAPS	WATER- INSIDE YARD	WATER- INSIDE HOUSE	BOREHOLES	DRAW WATER FROM STREAMS, DAMS, RIVER
Phalane	Yes				Yes
Upper Mkemane					Yes
Mpofini	Yes				
Small – Lokishi	Yes				
Ezitapile					Yes
Rolweni					Yes
Elukolweni	Yes				Yes
Epiphany	Yes				

Table 17: Access to water- Community Based Planning Program 2017 (Data Collection)

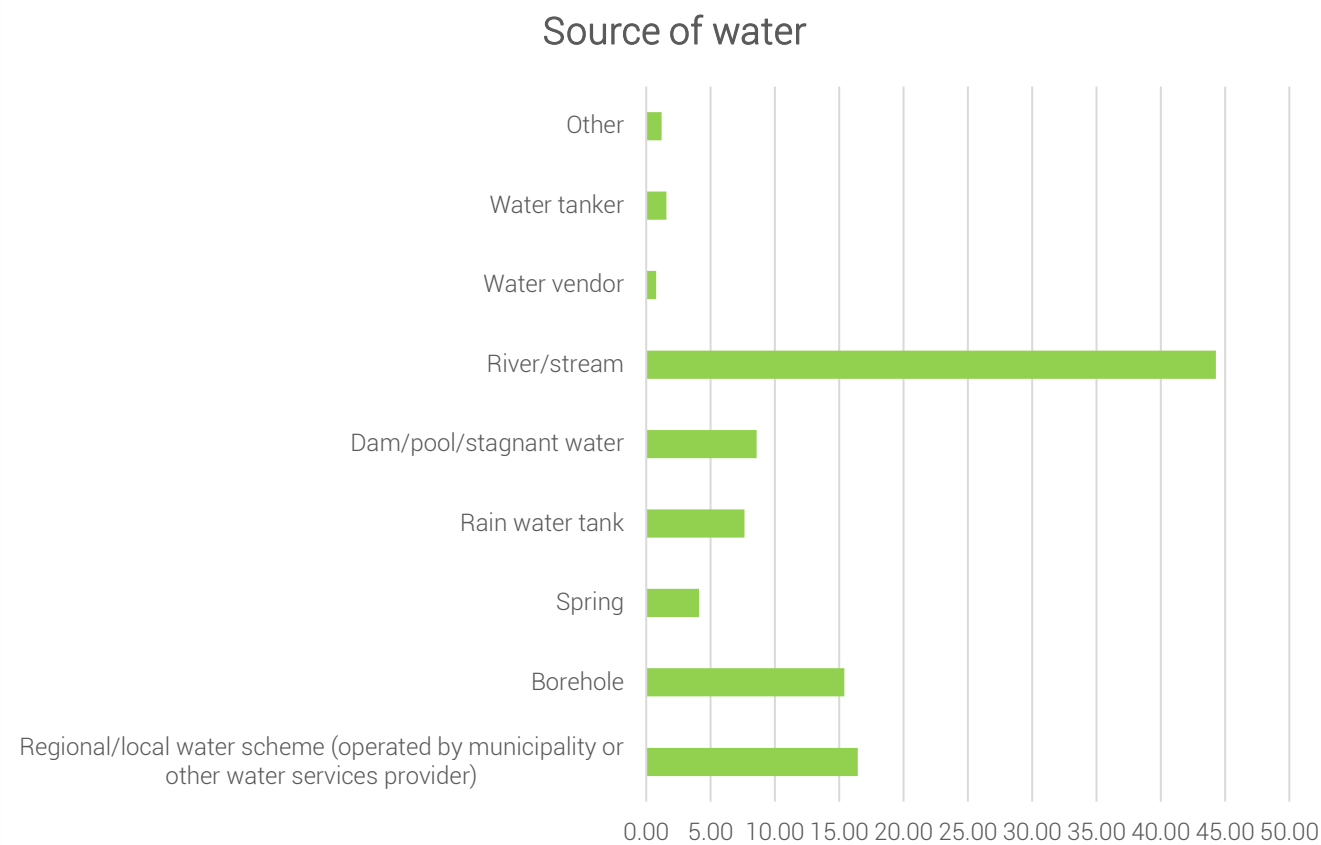


Figure 7: Source of Water supply within the Ward - Community Based Planning Program 2017 (Data Collection)

5.3 Access to Sanitation

District Municipality (ANDM) currently provides sanitation to the Matatiele area. As per Community Based Planning Program (Data Collection) 4 villages have access to ventilated pit toilets within the whole ward. This shows there is still a large number of backlog with regards to the provision of sanitation as 4 villages have no access to ventilated pit toilets within this ward.

VILLAGE/LOCATION	VENTILATED PIT TOILETS	FLUSH TOILETS	Other
Rolweni	No		
Elukolweni	No		
Phalane	Yes		
Epiphany	No		
Upper Mkemane	Yes		
Mpofini	Yes		
Small - lokishi	Yes		
Ezitapile	No		

Table 18: Access to sanitation- Community Based Planning Program 2017 (Data Collection)

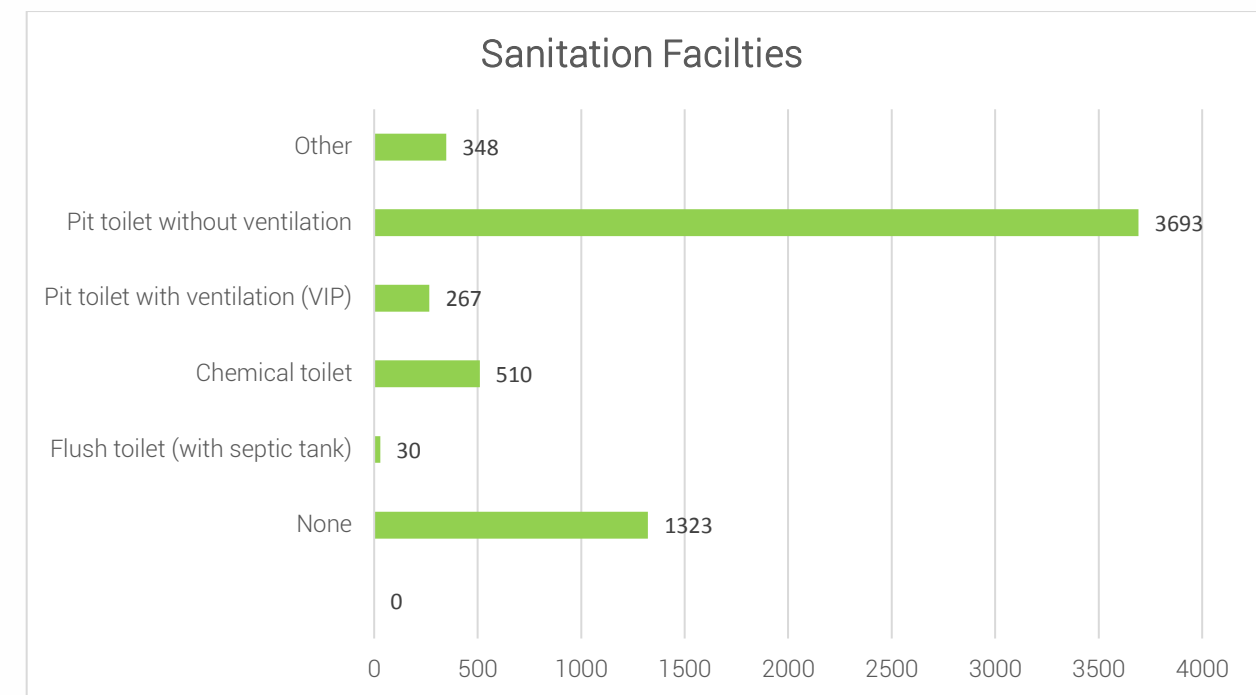
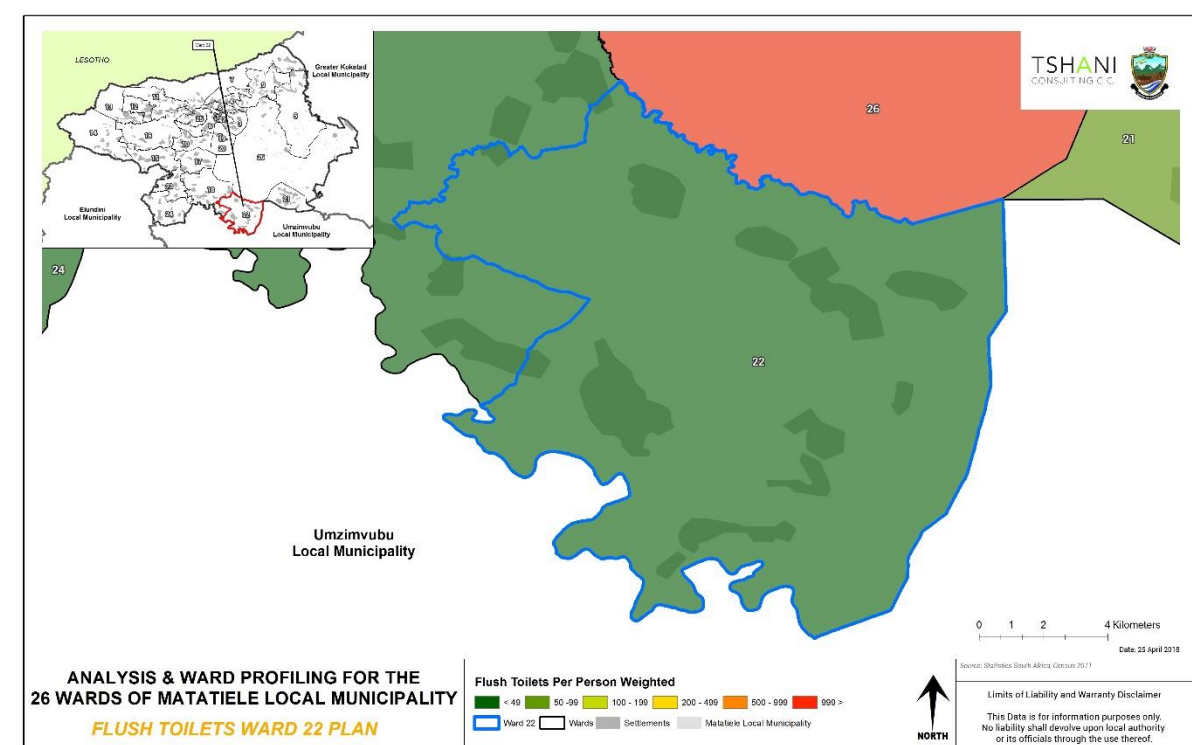


Figure 8: Access to Sanitation Facilities – Census 2011



Plan 5: Access to Flush toilets - Census 2011

5.4 Main Source of Energy

The villages within ward 22 have solar as the main source of energy. Ward 22 have no access to electricity The rest of the ward use solar for lighting and majority of the people within the ward use gas, wood and paraffin for purposes

of cooking. The local municipality should encourage the community to use solar energy and assist the process by educating communities of renewable energy.

VILLAGE/LOCATION/	ELECTRICITY	SOLAR	NO ELECTRICITY/SOLAR
Rolweni		Yes	
Elukholweni		Yes	
Phalane		Yes	
Epiphany		Yes	
Upper Mkemane		Yes	
Mpofini		Yes	
Small-Iokishi		Yes	
Ezitapile		Yes	

Table 19: Main Source of Energy- Community Based Planning Program 2017 (Data Collection)

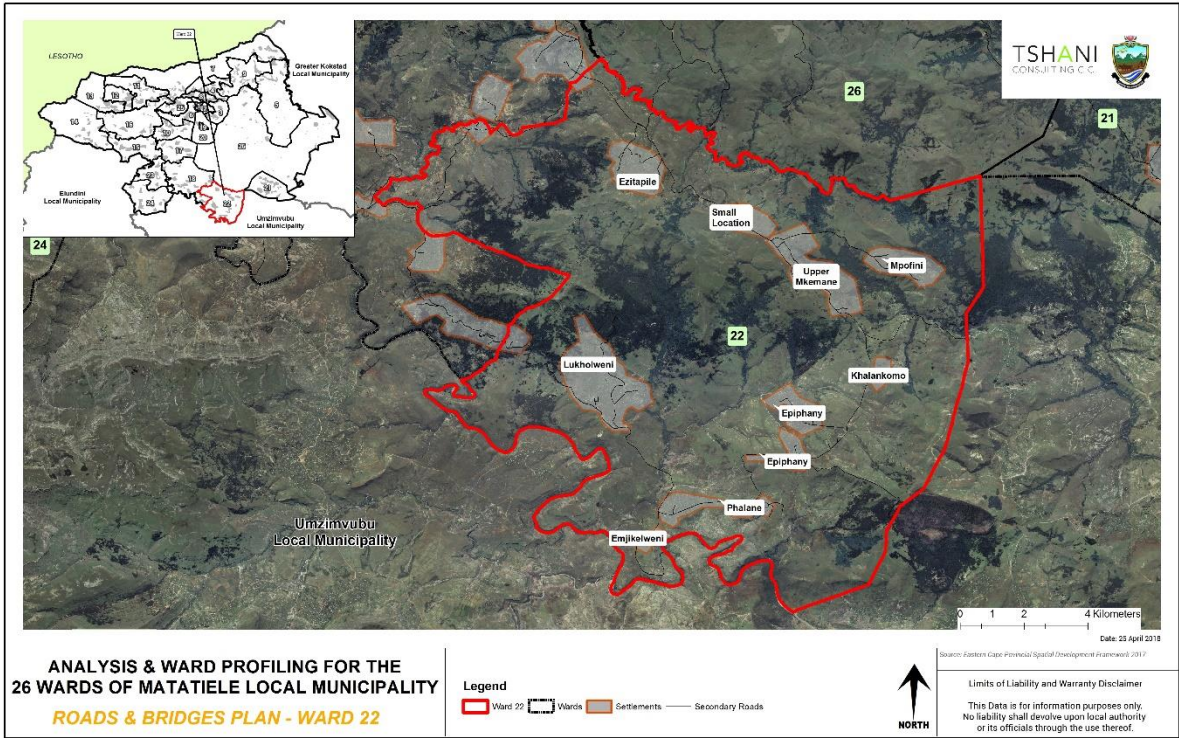
5.5 Roads and Bridges

The roads and bridges located within Ward 22, however they are in need of maintenance. The plan below picks up on the extent of roads networks which are present within the ward. The map identify all the villages within ward 22 with bridges and roads.

NAME AND TYPE	AREAS COVERED	CONDITION OF THE ROADS
DR08016	Phalane Village – Ezitapile	Bad
Mpofini access road	Upper Mkemane & Mpofini	Bad
Epiphany access road	Epiphany	Bad
Mbizweni access road	Phalane	Bad
Elukolweni access road	Elukolweni	Better

Rolweni Bridges	Rolweni	Bad
Ezitapile access road	Ezitapile	Good

Table 20: Roads and Bridges within the Ward- Community Based Planning Program 2017 (Data Collection)



Plan 6: Roads and Bridges within the Ward - MLM GIS

6. Current Projects

The following table highlighted the key projects which have been identified by the community. The projects are mainly linked to education. Further projects need to be targeted towards building a local economic base and spatial resilience.

No	PROJECT/PROGRAMME NAME	STATUS	WHO IS RESPONSIBLE
1	Nonkubela Women's Project	Functioning	Women
2	Masande Sharing Shed	Functioning	Men & Women
3	Bambanani Lukolweni Project	Functioning	Men & Women
4	Dinesh Blocks Project	Functioning	Individual
5	Ludidi Blocks Project	Functioning	Individual

6	Mkhulukhaya Blocks Project	Functioning	Individual
7	Magugu Sand Project	Functioning	Individual

Table 21: Current Projects- Community Based Planning Program 2017 (Data Collection)

7. Ward Needs and Priorities

The need and priorities which have been identified need to be prioritised in the municipal SDF and other local plans created. The projects range from short to long term projects and have been further broken down in the implementation plan.

VILLAGE/LOCATION/ SUB AREA	NEEDS IDENTIFIED
Mkhemane	Electricity, Mpofini maintenance, Water, RDP Houses
Mpofini	Electricity, Water, Access Road Maintenance, RDP Houses
Lukholweni	Electricity, clinic, Skills development, solar maintenance, T-Road (Tarred Road), Youth development, RDP Houses
Small location	Electricity, Houses for households affected by the disaster, T-Road maintenance, Water, wattle removal, scholar transport
Phalane	Electricity, Solar maintenance, Water, Toilets renovation, Scholar transport, Provincial road maintenance, RDP Houses
Zitapile	Electricity, Community hall, Completion of toilets project, Completion of water project, Creation of Job opportunities, Wonkqubela project funding, RDP Houses
Rolweni	Electricity, Bridge, Water, Toilets, Community hall, RDP Houses
Epiphany	Electricity, Clinic, school pedestrians bridge, Access Road maintenance, RDP Houses, Wattle removal, Access Road, Toilets, DR08049 T-Road be tarred

Table 22: Ward Needs and Priorities- Community Based Planning Program 2017 (Data Collection)

8. Stakeholder within Ward

The table below highlights the stakeholders which were engaged with during the Community engagement sessions.

NAME OF STAKEHOLDER	CONTACT PERSON AND TEL
Community Policing Forum	Mr. Scwebu :0724025393
Ward Councillor	Ward Councillor :0760791104

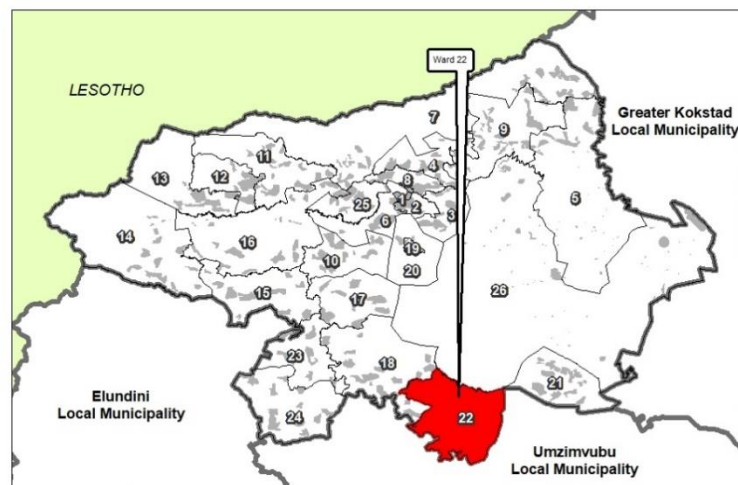
Table 23: Stakeholders engaged during community engagement sessions- Community Based Planning Program 2017 (Data Collection)

9. Key Social Challenges

The key social challenges identified within the ward are drug and alcohol abuse, crime and suicide. All villages are highly affected by the impacts of drug and alcohol abuse.

CHALLENGES IDENTIFIED	AFFECTED AREAS	IMPACT
Alcohol abuse	Elukholweni Epiphany, Phalane	High alcohol intake usually leads to recklessness and sexual abuse; loss of respect
Crime	Elukolweni	Fear in residents
Suicide	Upper Mkemane	A need for awareness campaigns to address this issue
Drug abuse	All villages	High dropout rates and unemployment

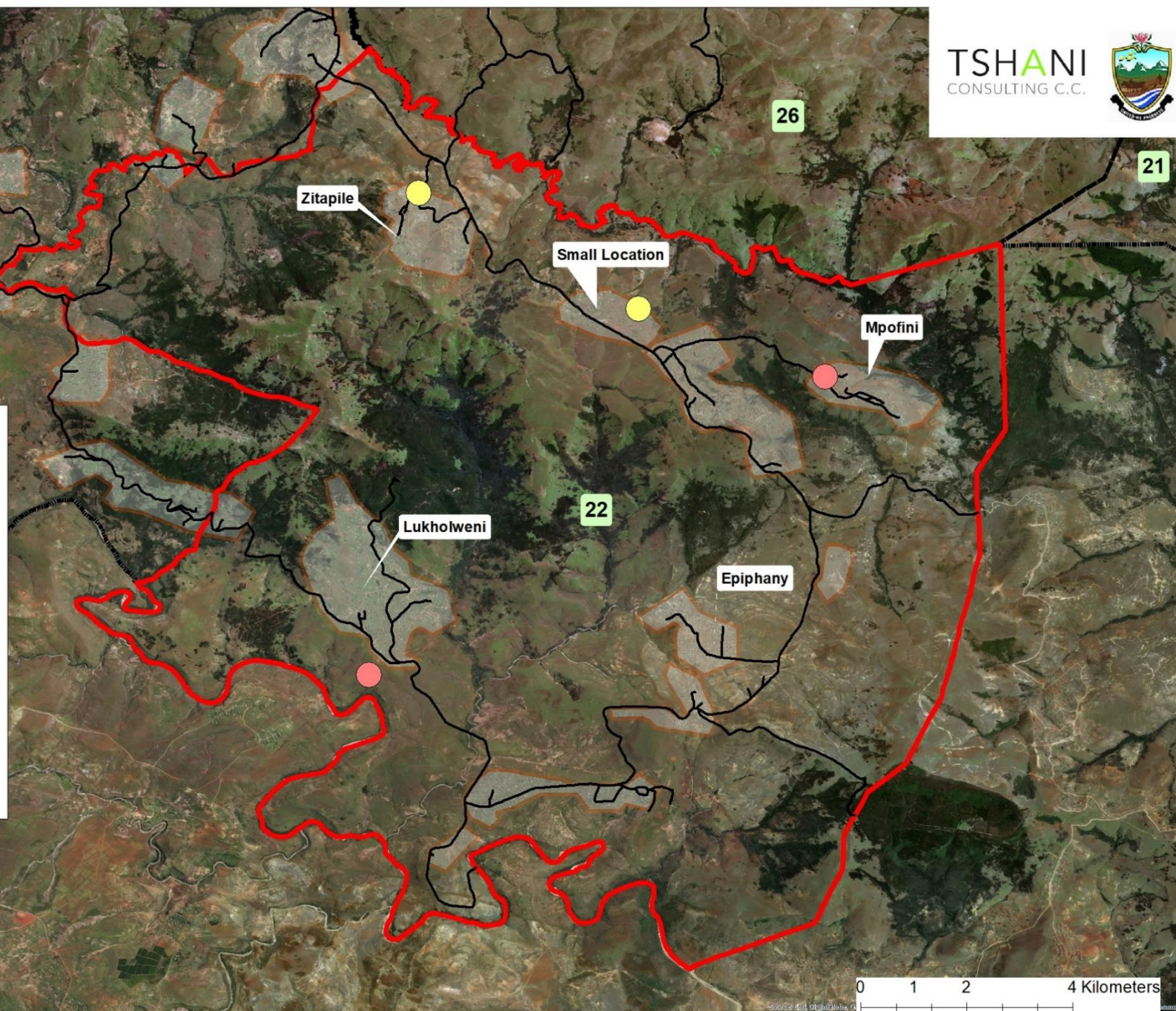
Table 24: Key Social Challenges- Community Based Planning Program 2017 (Data Collection)



TSHANI
CONSULTING C.C.



Mkhemane	Electricity, Mpofini maintenance, Water
Mpofini	Electricity, Water, Access Road Maintenance
Lukholweni	Electricity, clinic, Skills development, solar maintenance, T-Road (Tarred Road), Youth development
Small location	Electricity, Houses for households affected by the disaster, T-Road maintenance, Water, wattle removal, scholar transport
Phalane	Electricity, Solar maintenance, Water, Toilets renovation, Scholar transport, Provincial road maintenance
Zitapile	Electricity, Community hall, Completion of toilets project, Completion of water project, Creation of Job opportunities, Wonkqubela project funding
Rolweni	Electricity, Bridge, Water, Toilets, Community hall
Epiphany	Electricity, Clinic, school pedestrians bridge, Access Road maintenance, RDP Houses, Wattle removal, Access Road, Toilets, DR08049 T-Road be tarred



0 1 2 4 Kilometers

Date: 26 April 2018

ANALYSIS & WARD PROFILING FOR THE 26 WARDS OF MATATIELE LOCAL MUNICIPALITY

WARD PRIORITY - WARD 22

Legend



Source: Eastern Cape Provincial Spatial Development Framework 2017
Matatiele Local Municipality

Limits of Liability and Warranty Disclaimer

This Data is for information purposes only.
No liability shall devolve upon local authority
or its officials through the use thereof.